

R-32



DHC | DHG | DHH

HIGH-EFFICIENCY

AC | GAS/ELECTRIC: 3-12½ Ton

HEAT PUMP: 3-6 Ton



R32





# **ENERGY-EFFICIENT. QUALITY. DESIGN FLEXIBILITY.**

**Raise the bar** with  
Daikin Light Commercial  
Packaged RTUs!



## Commercial Comfort. No Compromise.

Considering the unique needs of light commercial building owners and tenants, experiencing comfortable indoor environments while keeping energy costs low is essential. Daikin's approach to combining innovative HVAC technology with practical, energy-efficient Light Commercial Packaged Rooftop Units (RTUs) can help meet the diverse landscape. Daikin RTUs are not only a scalable solution but are reinforced by Daikin's innovative technology, such as our high-performance compressors, which operate with high-efficiency coils. This exceptional construction offers state-of-the-art reliability, durability, and efficiency.

Daikin RTUs are built to perform with factory and field-installed features and options that help provide low installation and operation costs, improved indoor air quality, efficient operation, and longevity. With quick and straightforward installation in mind, Daikin RTUs are ideal for new construction and retrofit projects.

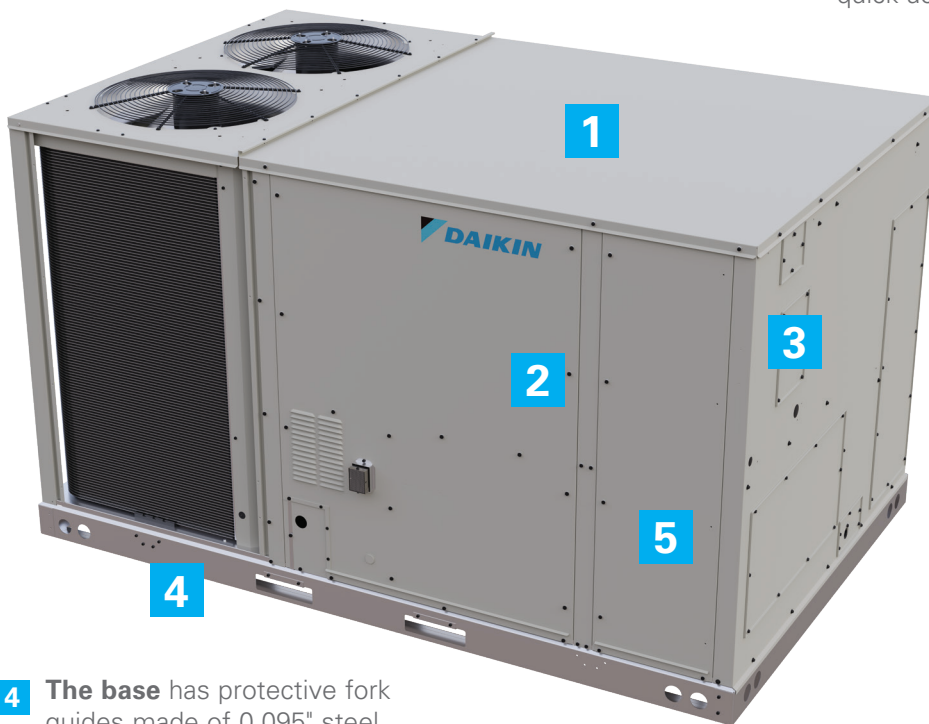


# BUILT TO PERFORM

**Bring ease of installation, efficiency, and flexibility** to the forefront of every light commercial project. Whether you need a straight cooling unit, heat pump, or gas/electric, Daikin's innovative technologies, key product features, and outstanding limited warranty\* coverage are what help make the difference. Don't compromise. **Demand Daikin!**

## KEY FEATURES:

- 1 Weather Resistant Cabinet.** The cabinet is constructed of painted heavy-gauge galvanized steel and steel base rail to provide structural integrity. The design features downward-turned base pan flanges that help provide additional protection to the interior from the environment.
- 2 Serviceability.** Ease of serviceability is essential to help streamline installation, service, and maintenance. The panel design features easy blower, fan, motor, controls, and compressor access. Filter access panels and optional hinged panels can be opened without tools to provide quick access.
- 3 Installation.** All sizes include built-in through-the-base options and horizontal access knockouts for easy infield wiring and piping installation. Another benefit of the new design is that it fits many existing unit footprints without needing a curb adaptor (3-12.5 Ton).
- 4 The base** has protective fork guides made of 0.095" steel help to limit handling damage.
- 5 Field Conversion.** To further support application flexibility, the supply and return can be field converted on 3-12.5 Ton models from downflow to horizontal for ease of installation.



## OUTSTANDING WARRANTY\* PROTECTION

### DHC / DHH / DHG



\* Complete warranty details available from your local dealer/distributor or at [www.daikincomfort.com](http://www.daikincomfort.com) or [www.daikinac.com](http://www.daikinac.com).

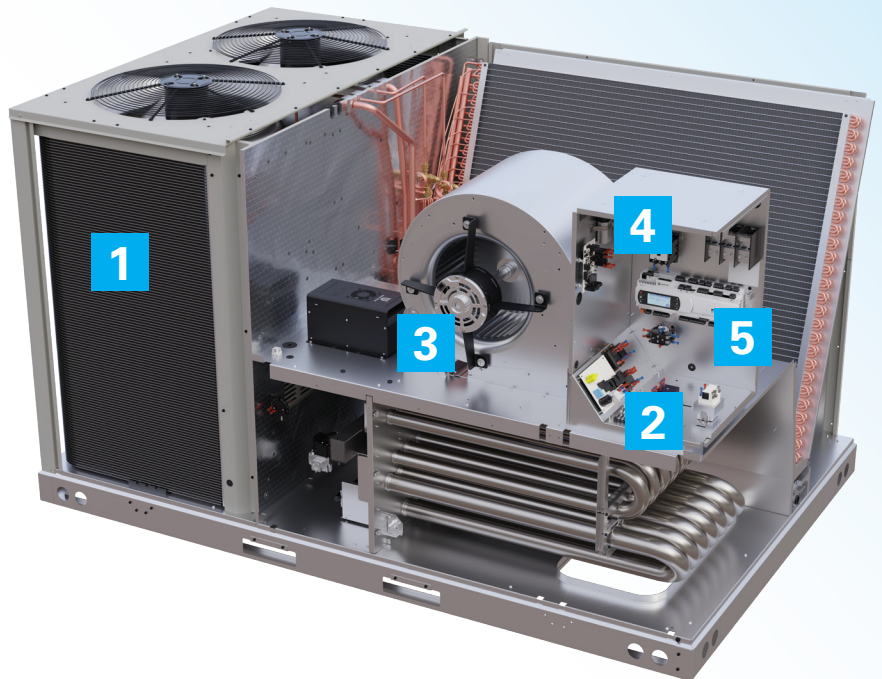


## KEY FACTORY INSTALLED OPTIONS (FIOPS):

- » Hot Gas Reheat (only available on Gas/Electric and AC models)
- » Electric Heat
- » Downflow Economizer
- » Stainless Steel HX (Gas/Electric Units)
- » Non-fused Disconnect Switch
- » Non-powered Convenience Outlet
- » Low-Ambient Kits
- » Phase Monitors
- » Smoke Detectors (Return, Supply or Both)
- » Powered Convenience Outlet
- » Hinged Panels
- » Hail Guard
- » *iLINQ* DDC Controller



LEARN MORE AT  
[http://www.daikinac.com/  
content/light-commercial](http://www.daikinac.com/content/light-commercial)



- 1 SmartCoil Technology.** Daikin patented 5mm *SmartCoil* technology<sup>1</sup> creates a high efficiency coil with increased airflow heat transfer compared to systems without *SmartCoil* technology.
- 2 Wiring.** All sizes include built-in through the base options and horizontal access knockouts, for easy infield wiring and piping installation.
- 3 Direct-Drive Motor.** Helps improve performance and limits the need for routine maintenance. 5 individual speed taps can be selected to meet individual building needs. Medium and high static range for applications of up to 2 in. water gauge of External Static Pressure (ESP) are also available.
- 4 Refrigerant Detection System.** The Refrigerant Detection System is a safety sensor provided with every unit to prevent the concentration of refrigerant to the space if a refrigerant leak is detected.
- 5 Daikin *iLINQ* DDC Controller.** Available on all High-Efficiency units and comes standard on Hot Gas Reheat units.

<sup>1</sup> Select models



# CONTROLS

## Daikin AppStat™

The Daikin *AppStat* is a field-installed option used with Light Commercial systems. The Daikin *AppStat* thermostats provide built-in control sequences and a BACnet® MS/TP connection to integrate with a Building Management System (BMS).

- » Stand-alone operation with built-in control programs and configuration options.
- » Bright, full-color LCD display with five buttons for full configuration.
- » Native *BACnet* application-specific controller.
- » Supports air conditioning and heat pump applications.



## THERMOSTATS WITH CONNECTIVITY AND SKYPORT™ CLOUD

- » Monitor unlimited thermostats and locations from a single user-friendly dashboard using Web Access or the Daikin *Skyport* App.
- » Monitor alarms and alerts.
- » Global commands and controls.
- » All thermostats are compatible with the Daikin *Skyport* App that can be found on your smart phone.



Learn more at:  
[daikin.skyportcloud.com](http://daikin.skyportcloud.com)

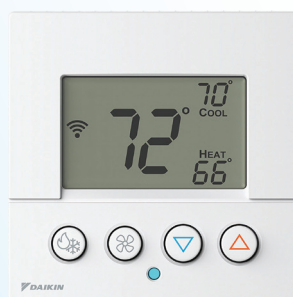
### COLORTOUCH® THERMOSTAT



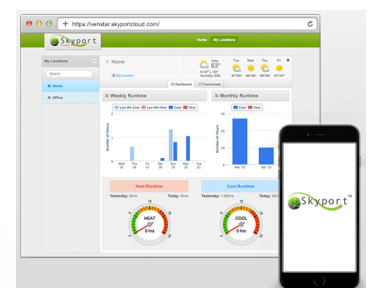
### DAIKIN PREMIUM THERMOSTAT



### DAIKIN PREMIUM MINI WI-FI THERMOSTAT



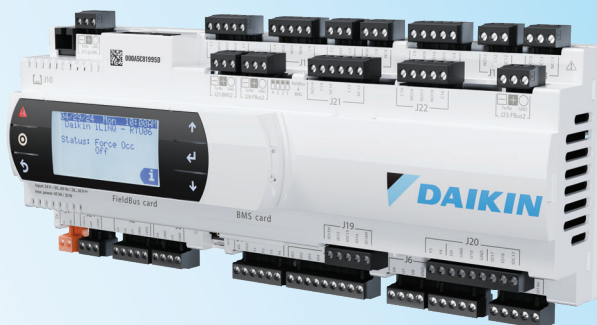
### DAIKIN SKYPORT CLOUD APPLICATION





## DAIKIN *i*LINQ DDC CONTROLLER:

- » Preprogrammed and factory-installed controller.
- » Built-in LCD display for local commissioning, monitoring, and control.
- » Third-party BAS integration using *BACnet* MS/TP and *BACnet* IP
- » Web access for customers that don't have a building automation system.
- » Modulating hot gas reheat control (MHGRH).
- » Demand control ventilation.
- » California Title 24 certified economizer control.



## DAIKIN *i*LINQ ROOM TERMINAL: (Works with *i*LINQ controller only)

- » 4.3" full-color touch screen.
- » Remote control and configuration of the RTU from inside the building.
- » Built-in temperature and humidity sensors.
- » Modulating hot gas reheat control.
- » Monitor up to 10 RTUs from one touchscreen.



## DAIKIN LCXPRESS SELECTION TOOL

A product configuration tool designed for Daikin rooftop units. With the new LCXpress Tool:

- » Select and build the proper packaged system (based on project needs).
- » Develop performance reports.
- » Full submittal report development capabilities.
- » Generate mechanical schedules and more.



For more information, visit:  
[www.daikinac.com/content/  
resources/software-tools/](http://www.daikinac.com/content/resources/software-tools/)





## ABOUT DAIKIN

Daikin Industries, Ltd. (DIL) is a global Fortune 1000 company and is recognized as one of the largest HVAC (Heating, Ventilation, Air Conditioning) manufacturers in the world. Founded in 1924, Daikin is celebrating 100 years of HVAC worldwide leadership. DIL is primarily engaged in developing indoor comfort systems and refrigeration products for residential, commercial, and industrial applications. Its consistent success is derived, in part, from a focus on innovative, energy-efficient, and premium quality indoor climate and comfort management solutions.

### WARNINGS:

- » Always use a licensed installer or contractor to install this product. Do not try to install the product yourself. Improper installation can result in water or refrigerant leakage, electrical shock, fire or explosion.
- » Use only those parts and accessories supplied or specified by Daikin. Ask a licensed contractor to install those parts and accessories. Use of unauthorized parts and accessories or improper installation of parts and accessories can result in water or refrigerant leakage, electrical shock, fire or explosion.
- » Read the User's Manual carefully before using this product. The User's Manual provides important safety instructions and warnings. Be sure to follow these instructions and warnings.
- » For any inquiries, contact your local Daikin sales office.
- » Working with all refrigerants involves a degree of liability. It is recommended to use best practices and always adhere to safety protocols before, and during, work with any refrigerants.
- » DO NOT MIX REFRIGERANTS
- » A2L refrigerants can only be used in new equipment.
- » A2L refrigerants CANNOT be used as a retrofit refrigerant.
- » Codes are rapidly changing and allowing A2L refrigerants throughout North America. Check with your local Daikin Distributor for latest product availability information.

Contact your local Daikin manufacturer's representative or distributor for more information.

*BACnet* is a trademark of ASHRAE.

### ADDITIONAL INFORMATION

Before purchasing this appliance, read important information about its estimated annual energy consumption, yearly operating cost, or energy efficiency rating that is available from your retailer.