



HIGH-EFFICIENCY

DRC | DRG | DRH

AC | GAS/ELECTRIC: 3 - 12.5 Ton

HEAT PUMP: 3 - 6 Ton



BUILT TO PERFORM



Commercial Comfort. No Compromise.

As you think about the functionality of your property's indoor comfort, the Daikin portfolio of solutions is ready to help you achieve control, energy efficiency, and long-term peace of mind. Take that attention to quality one step further by considering a state-of-the-art Daikin brand, energy-efficient Light Commercial Rooftop system. We have designed and engineered all our products to provide years of consistent indoor comfort — delivering the type of comfort you never thought possible.

Daikin Packaged Rooftop Units (RTUs) are built to perform, with features and options that help provide low installation and operation costs, superior indoor air quality, efficient operation, and longevity. With options for a wide range of application opportunities, Daikin RTUs are designed with fast and easy installation in mind and are ideal for both new construction and retrofit projects.



RETAIL



RESTAURANT



HOTEL/HOSPITALITY



GYMS



EDUCATION



OFFICE



HEALTHCARE



BANKS



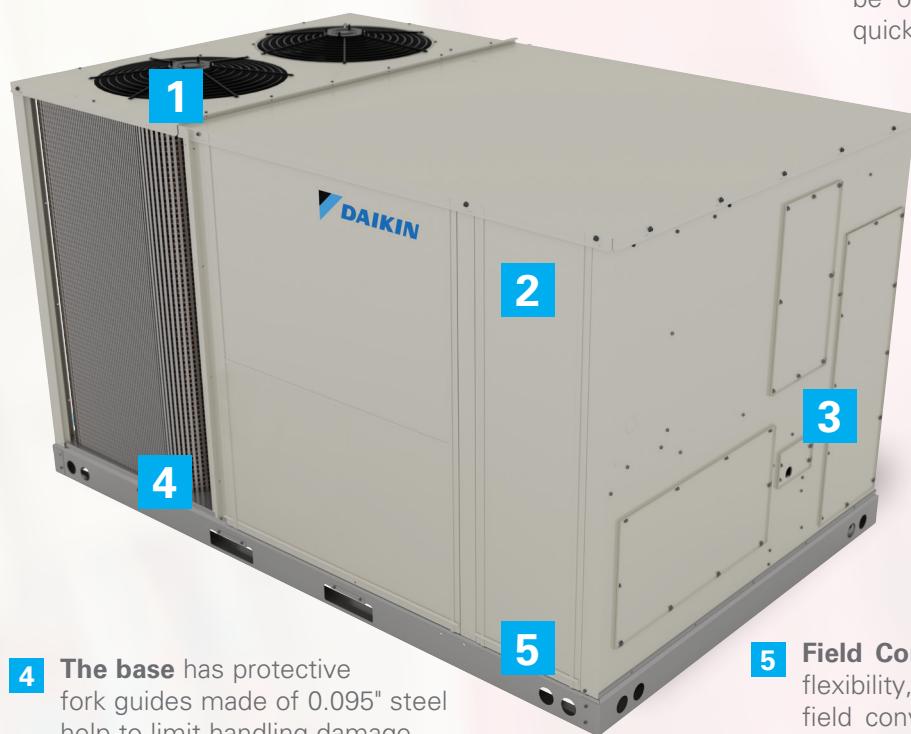
CURB APPEAL, ENERGY-EFFICIENT PERFORMANCE, AND QUALITY.

Raise the bar with Daikin Air Intelligence!

With Daikin's new line of Light Commercial Packaged RTUs, bring ease of installation, efficient operation, and outstanding limited warranty* coverage to the forefront of every project. Whether you need a straight cooling unit, heat pump, or gas/electric, you'll find cogent features such as 5mm condensing coils (only available on select sizes and fuel types), outstanding heat pump features, and our most durable tubular heat exchanger. When you want the best, don't compromise. Demand Daikin!

KEY FEATURES:

- 1 Weather Resistant Cabinet.** Manufactured at the Daikin Texas Technology Park (DTTP), the cabinet is constructed of painted heavy-gauge galvanized steel and steel base rail to provide structural integrity. The all-new design features downward turned base pan flanges which brings additional protection of the interior from the environment.
- 2 Serviceability.** Ease of serviceability is essential to help streamline installation, service, and maintenance. With this in mind, serviceability was a top priority in the new Daikin RTU design. The new design features easy access to the fan, motor, controls, and compressor. Filter access doors and optional hinged panels can be opened without the use of tools to provide quick access.
- 3 Installation.** All sizes include built-in through the base options and horizontal access knockouts, for easy infield wiring and piping installation. Another benefit of the new design is that it fits many existing unit footprints without the need for a curb adaptor (3 – 12.5 Ton).
- 4 The base** has protective fork guides made of 0.095" steel help to limit handling damage.
- 5 Field Conversion.** To drive application flexibility, the supply and return can be field converted (Available on sizes 3 – 12.5 Ton for small and medium chassis) from downflow to horizontal, and help with easier installation (compared to previous designs) using our 1" ducting flanges.



OUTSTANDING WARRANTY* PROTECTION

DRC / DRH	DRG

* Complete warranty details available from your local dealer/distributor or at www.daikincomfort.com or www.daikinac.com.

KEY FACTORY INSTALLED OPTIONS (FIOPS)*:

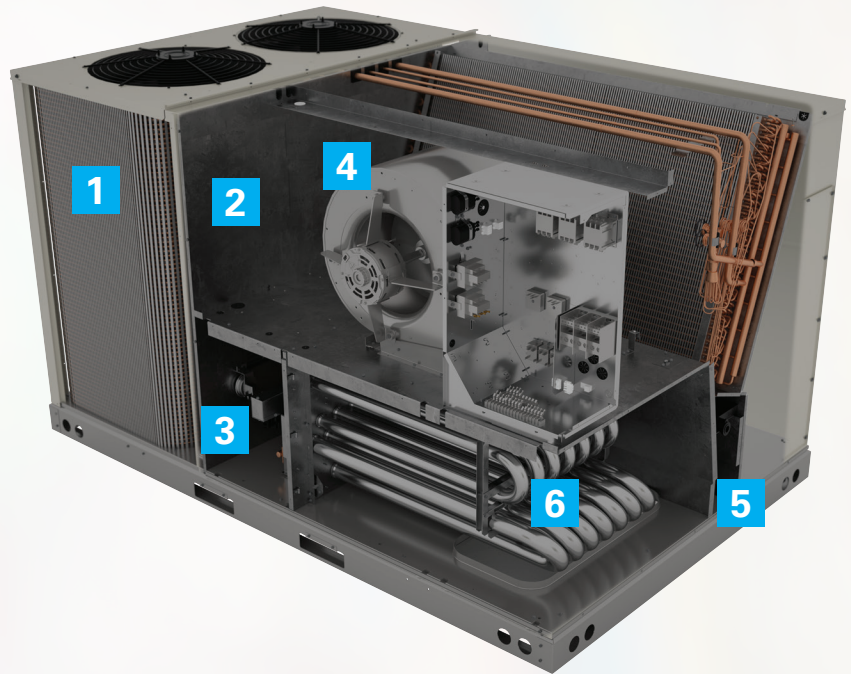
- » Ultra Low-leak
Downflow Economizer
- » Low-leak
Downflow Economizer
- » Stainless Steel HX
(Gas/Electric Units)
- » Non-fused
Disconnect Switch
- » Non-powered
Convenience Outlet
- » Low-Ambient Kits
- » Phase Monitors
- » Smoke Detectors
- » Powered Convenience Outlet
- » Hinged Panels
- » Hail Guard

* Not all FIOPs available
at initial launch



LEARN MORE AT
[http://www.daikinac.com/
content/light-commercial](http://www.daikinac.com/content/light-commercial)

TECHNOLOGY THAT MATTERS



1 SmartCoil Technology. Daikin patented 5mm *SmartCoil* technology¹ creates a high efficiency coil with increased airflow heat transfer.

2 Wiring. All sizes include built-in through the base options and horizontal access knockouts, for easy infield wiring and piping installation.

3 Compressor. Two-stage scroll compressor helps improve unit efficiency, reliability, and quiet operation.

4 ECM Direct-Drive Fan. The energy efficient indoor fan is powered by a direct-drive ECM motor. The elimination of belts and pulleys helps for easy on the field installation and airflow balance. The fan features intuitive speed adjustment controls and a high static option of up to 2 in. w.g of ESP for an increase of blower performance.

5 Drain Pan. Removable drain pan¹ to facilitate maintainability and helps improve indoor air quality (compared to previous designs). Also available with a drain pan overflow switch as an option.

6 Tubular Stainless-Steel Heat Exchanger. Daikin's wrinkle bend technology offers added durability and overall efficiency to the new RTU design.

¹ Select models

DDC iLINQ



iLINQ

- » BACnet™ native
- » USB connector for software connection
- » Built-in display
- » Integrate into a building management system (BMS) or operate as a stand-alone digital system

WEB INTERFACE SOFTWARE

- » Set-up & commissioning
- » Complete access to all control points
- » Trend logging capabilities

COMMUNICATION

- » BACnet™ IP
- » BACnet™ MS/TP
- » LonWorks®

AppStat™

The AppStat is a field-installed option used with Light Commercial systems. The AppStat thermostats provide built-in control sequences and a BACnet™ MS/TP connection to integrate with a Building Management System (BMS).

- » Stand-alone operation with built-in control programs and configuration options
- » Bright, full-color LCD display with five buttons for full configuration
- » Native BACnet application-specific controller



THERMOSTATS AND CONNECTIVITY OPTIONS

PREMIUM TOUCH CONTROLLER



Features built-in Wi-Fi and a high resolution, full-color touchscreen display. Available with humidification and dehumidification options, including reheat and variable-speed fan control with compatible HVAC systems.

PREMIUM MINI SERIES THERMOSTAT



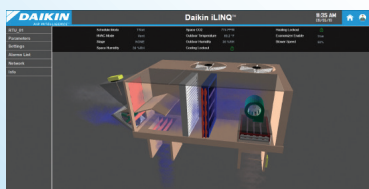
- » Gas/electric, AC, or heat pump
- » 2 heat, 2 cool multi-stage
- » 7 day programmable
- » Large, easy to read display (Wi-Fi compatible)
- » Title 24 compliant

CLOUD APPLICATION



This secure and Private Cloud Service provides a powerful yet easy-to-use command and control platform for your HVAC system that can be accessed from anywhere in the world.

WEB ACCESS



- » Graphic Interface
- » Remote management

WIRELESS TEMPERATURE SENSOR



ADDITIONAL SENSOR OPTIONS



- » Analog and digital temperature and temperature/humidity sensors
- » CO₂ sensors

Note: can connect to regular low voltage 24V thermostats. Both for new construction and replacements jobs.

For more information on the above thermostats and connectivity options, visit: www.daikinac.com.

ABOUT DAIKIN



Daikin Industries, Ltd. (DIL) is a global Fortune 1000 company, which celebrated its 95th anniversary in May 2019. The company is recognized as one of the largest HVAC (Heating, Ventilating, Air Conditioning) manufacturers in the world. DIL is primarily engaged in developing indoor comfort products, systems, and refrigeration products for residential, commercial, and industrial applications. Its consistent success is derived, in part, from a focus on innovative, energy-efficient, and premium quality indoor climate and comfort management solutions.



ADDITIONAL INFORMATION

Before purchasing an appliance in this document, read important information about its energy efficiency rating that is available from your retailer.

Contact your local Daikin manufacturer's representative or distributor for more information.



Our continuing commitment to quality products may mean a change in specifications without notice.

© 2021 **DAIKIN NORTH AMERICA LLC** · Houston, Texas · USA · www.daikincomfort.com or www.daikinac.com

CB-LCHE 02-21