



Submittal Data Sheet

Energy Recovery Ventilator 1200
VAM1200GVJU

FEATURES

- Superior performance with a high efficiency fan and the capability for use in a wide range of climates (5°F DB ~ 122°F DB and 80% RH or less) *
- Interlocked simultaneous operation with VRV indoor units
- Pre-cooling/heating control function to delay the start of ventilation during air conditioner start-up for higher energy savings
- Unique functions such as independent operation, interlock with other HVAC systems and automatic night purge to reduce cooling loads and increase energy savings
- Standard Limited Warranty: 10-year warranty on compressor and all parts



* Performance characteristics certified to AHRI Standard 1060 are only applicable to the cooling and heating operating conditions specified in the performance table of this document.

- The cooling effectiveness shall be based on 95°F DB / 78°F WB for the entering supply air and 75°F DB / 63°F WB for the entering exhaust air, at a leaving supply airflow of both 100% and 75% of the rated airflow.

- The heating effectiveness shall be based on 35°F DB / 33°F WB for the entering supply air and 70°F DB / 58°F WB for the entering exhaust air, at a leaving supply airflow of both 100% and 75% of the rated airflow.

Daikin North America LLC, 5151 San Felipe, Suite 500, Houston TX, 77056
www.daikinac.com www.daikincomfort.com

(Daikin's products are subject to continuous improvements. Daikin reserves the right to modify product design, specifications and information in this data sheet without notice and without incurring any obligations).



Submittal Data Sheet

Energy Recovery Ventilator 1200
VAM1200GVJU

PERFORMANCE

| Indoor Unit Model No. | VAM1200GVJU | Indoor Unit Name | Energy Recovery Ventilator 1200 |
|--|-------------|--|------------------------------------|
| Cooling Input Power (KW): | 1.72 | Heating Input Power (KW): | 1.72 |
| Rated Cooling Supply Air Condition (°F DB / WB): | 95 / 78 | Rated Heating Supply Air Condition (°F DB / WB): | 35 / 33 |
| Rated Cooling Exhaust Air Condition (°F DB / WB): | 75 / 63 | Rated Heating Exhaust Air Condition (°F DB / WB): | 70 / 58 |
| Rated Cooling Sensible Effectiveness (100% Airflow): | 68 | Rated Heating Sensible Effectiveness (100% Airflow): | 68 |
| Rated Cooling Latent Effectiveness (100% Airflow): | 34 | Rated Heating Latent Effectiveness (100% Airflow): | 42 |
| Rated Cooling Sensible Effectiveness (75% Airflow): | 72 | Rated Heating Sensible Effectiveness (75% Airflow): | 72 |
| Rated Cooling Latent Effectiveness (75% Airflow): | 37 | Rated Heating Latent Effectiveness (75% Airflow): | 47 |

* Certified in accordance with the AHRI ERV Certification Program, which is based on AHRI Standard 1060. Certified units may be found in the AHRI Directory at www.ahridirectory.org.



Daikin North America LLC, 5151 San Felipe, Suite 500, Houston TX, 77056
www.daikinac.com www.daikincomfort.com

(Daikin's products are subject to continuous improvements. Daikin reserves the right to modify product design, specifications and information in this data sheet without notice and without incurring any obligations).



Submittal Data Sheet

Energy Recovery Ventilator 1200
VAM1200GVJU

INDOOR UNIT DETAILS

| | | | |
|--|----------------------------|---------------------------------------|----------------|
| Power Supply (V/Hz/Ph): | 208-230/60/1 | Airflow Rate (HH/H/L) (CFM): | 1200/1200/930 |
| Power Supply Connections: | L1, L2, Ground | Connection Duct Diameter (in): | 14 |
| Min Circuit Amps MCA (A): | 8.1 | Gas Pipe Connection (in): | NA |
| Max Overcurrent Protection MOP (A): | 15 | Liquid Pipe Connection (in): | NA |
| Dimensions (HxWxD) (in): | 30-7/8 x 63-3/4 x 47-13/16 | Condensate Pipe Connection (in): | NA |
| Net Weight (lb): | 346 | Sound Pressure @ 208V (HH/H/L) (dBA): | 43/39/35 |
| Ext Static Pressure (HH/H/L) (in W.C.) | 0.56/0.16/0.24 | Sound Power @ 208V (HH/H/L) (dB): | 62.2/58.8/51.4 |

Daikin North America LLC, 5151 San Felipe, Suite 500, Houston TX, 77056
www.daikinac.com www.daikincomfort.com

(Daikin's products are subject to continuous improvements. Daikin reserves the right to modify product design, specifications and information in this data sheet without notice and without incurring any obligations).

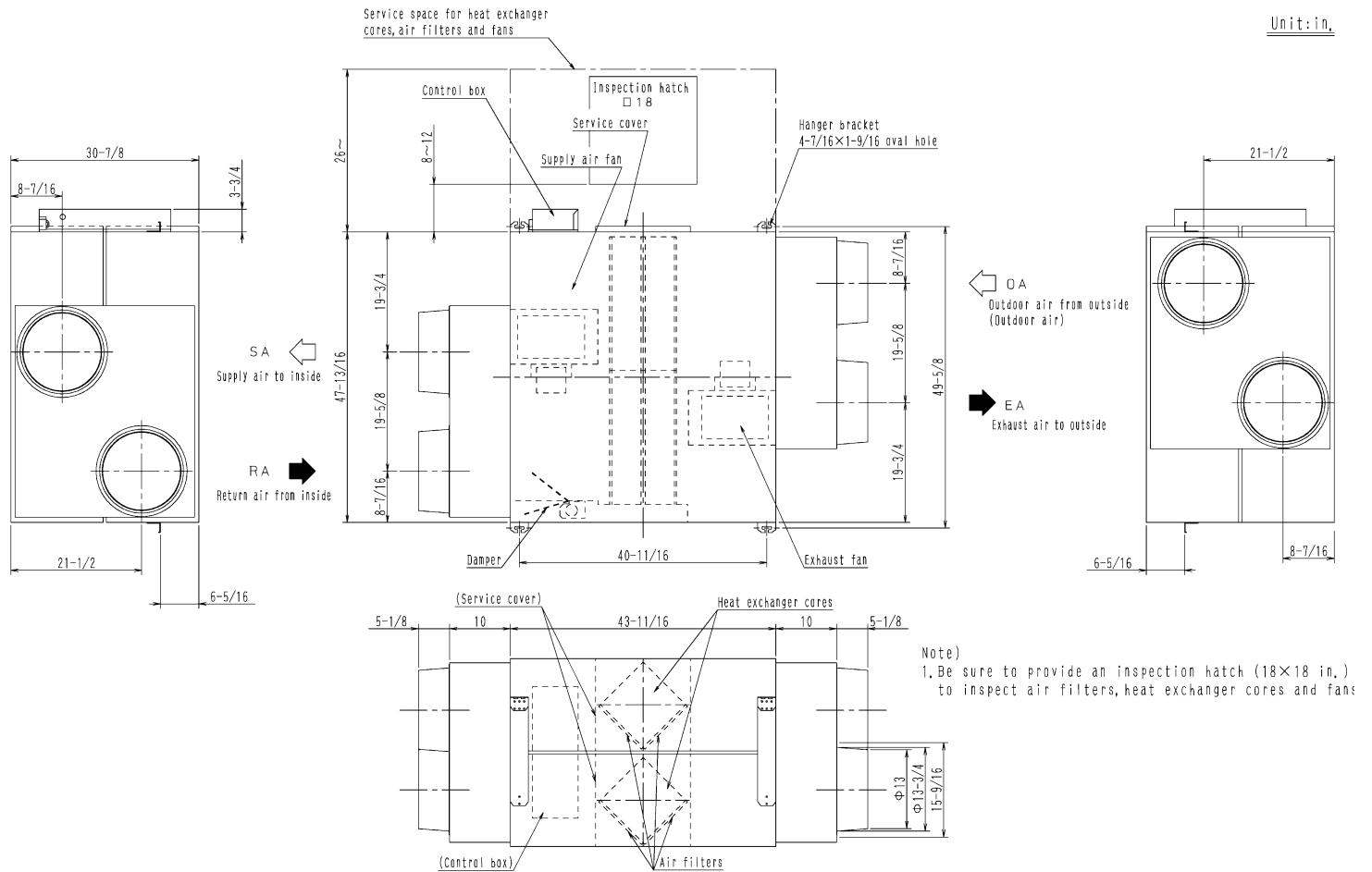


Submittal Data Sheet

Energy Recovery Ventilator 1200

VAM1200GVJU

DIMENSIONAL DRAWING



Daikin North America LLC, 5151 San Felipe, Suite 500, Houston TX, 77056
www.daikinac.com www.daikincomfort.com

(Daikin's products are subject to continuous improvements. Daikin reserves the right to modify product design, specifications and information in this data sheet without notice and without incurring any obligations).