



## Submittal Data Sheet

Energy Recovery Ventilator 600  
VAM600GVJU

### FEATURES

- Superior performance with a high efficiency fan and the capability for use in a wide range of climates (5°F DB ~ 122°F DB and 80% RH or less) \*
- Interlocked simultaneous operation with VRV indoor units
- Pre-cooling/heating control function to delay the start of ventilation during air conditioner start-up for higher energy savings
- Unique functions such as independent operation, interlock with other HVAC systems and automatic night purge to reduce cooling loads and increase energy savings
- Standard Limited Warranty: 10-year warranty on compressor and all parts



\* Performance characteristics certified to AHRI Standard 1060 are only applicable to the cooling and heating operating conditions specified in the performance table of this document.

- The cooling effectiveness shall be based on 95°F DB / 78°F WB for the entering supply air and 75°F DB / 63°F WB for the entering exhaust air, at a leaving supply airflow of both 100% and 75% of the rated airflow.

- The heating effectiveness shall be based on 35°F DB / 33°F WB for the entering supply air and 70°F DB / 58°F WB for the entering exhaust air, at a leaving supply airflow of both 100% and 75% of the rated airflow.

Daikin North America LLC, 5151 San Felipe, Suite 500, Houston TX, 77056  
[www.daikinac.com](http://www.daikinac.com) [www.daikincomfort.com](http://www.daikincomfort.com)

(Daikin's products are subject to continuous improvements. Daikin reserves the right to modify product design, specifications and information in this data sheet without notice and without incurring any obligations).



## Submittal Data Sheet

Energy Recovery Ventilator 600  
VAM600GVJU

### PERFORMANCE

Indoor Unit Model No.	VAM600GVJU	Indoor Unit Name	Energy Recovery Ventilator 600
Cooling Input Power (KW):	0.859	Heating Input Power (KW):	0.859
Rated Cooling Supply Air Condition (°F DB / WB):	95 / 78	Rated Heating Supply Air Condition (°F DB / WB):	35 / 33
Rated Cooling Exhaust Air Condition (°F DB / WB):	75 / 63	Rated Heating Exhaust Air Condition (°F DB / WB):	70 / 58
Rated Cooling Sensible Effectiveness (100% Airflow):	68	Rated Heating Sensible Effectiveness (100% Airflow):	68
Rated Cooling Latent Effectiveness (100% Airflow):	34	Rated Heating Latent Effectiveness (100% Airflow):	42
Rated Cooling Sensible Effectiveness (75% Airflow):	72	Rated Heating Sensible Effectiveness (75% Airflow):	72
Rated Cooling Latent Effectiveness (75% Airflow):	37	Rated Heating Latent Effectiveness (75% Airflow):	47

\* Certified in accordance with the AHRI ERV Certification Program, which is based on AHRI Standard 1060. Certified units may be found in the AHRI Directory at [www.ahridirectory.org](http://www.ahridirectory.org).



Daikin North America LLC, 5151 San Felipe, Suite 500, Houston TX, 77056  
[www.daikinac.com](http://www.daikinac.com) [www.daikincomfort.com](http://www.daikincomfort.com)

(Daikin's products are subject to continuous improvements. Daikin reserves the right to modify product design, specifications and information in this data sheet without notice and without incurring any obligations).



## Submittal Data Sheet

Energy Recovery Ventilator 600

VAM600GVJU

### INDOOR UNIT DETAILS

Power Supply (V/Hz/Ph):	208-230/60/1	Airflow Rate (HH/H/L) (CFM):	600/600/500
Power Supply Connections:	L1, L2, Ground	Connection Duct Diameter (in):	10
Min Circuit Amps MCA (A):	4.2	Gas Pipe Connection (in):	NA
Max Overcurrent Protection MOP (A):	15	Liquid Pipe Connection (in):	NA
Dimensions (HxWxD) (in):	15-1/4 x 43-11/16 x 47-13/16	Condensate Pipe Connection (in):	NA
Net Weight (lb):	148	Sound Pressure @ 208V (HH/H/L) (dBA):	40.1/37/33.1
Ext Static Pressure (HH/H/L) (in W.C.)	0.76/0.34/0.32	Sound Power @ 208V (HH/H/L) (dB):	57.7/54.9/52

Daikin North America LLC, 5151 San Felipe, Suite 500, Houston TX, 77056  
[www.daikinac.com](http://www.daikinac.com) [www.daikincomfort.com](http://www.daikincomfort.com)

(Daikin's products are subject to continuous improvements. Daikin reserves the right to modify product design, specifications and information in this data sheet without notice and without incurring any obligations).

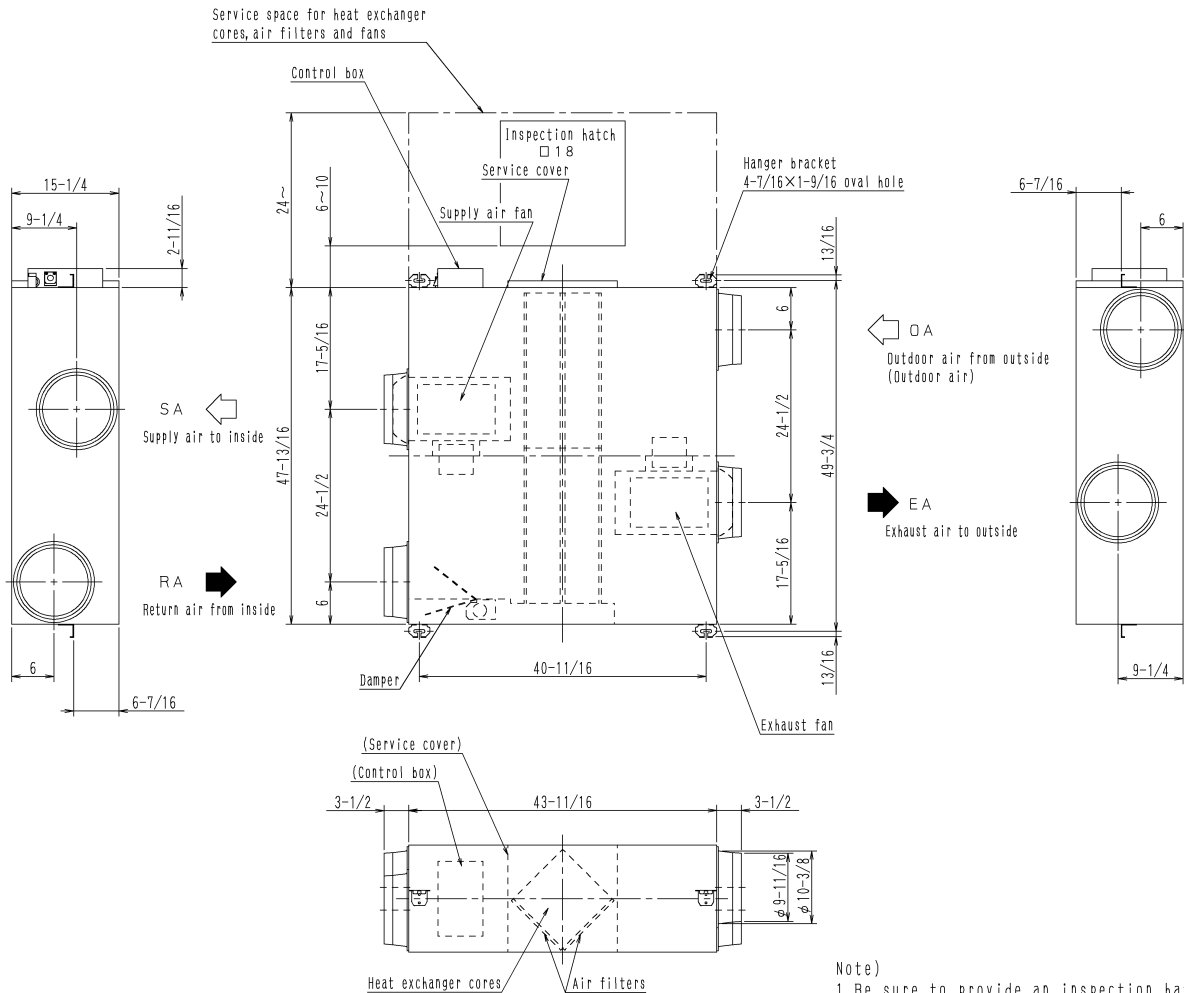


# Submittal Data Sheet

## Energy Recovery Ventilator 600

### VAM600GVJU

### DIMENSIONAL DRAWING



Unit: in.

Note)  
1. Be sure to provide an inspection hatch (18×18 in.) to inspect air filters, heat exchanger cores and fans.

Daikin North America LLC, 5151 San Felipe, Suite 500, Houston TX, 77056  
[www.daikinac.com](http://www.daikinac.com) [www.daikincomfort.com](http://www.daikincomfort.com)

(Daikin's products are subject to continuous improvements. Daikin reserves the right to modify product design, specifications and information in this data sheet without notice and without incurring any obligations).