



## Submittal Data Sheet

1.25-Ton DC-Ducted Concealed Ceiling Unit

FXMQ15PBVJU

### FEATURES

- Increased capacity range for increased flexibility
- Improved efficiency with DC fan motor
- Ease of installation with auto adjusting airflow at commissioning based on external static pressure
- Easy maintenance with service access from below
- Installation flexibility with a low profile, compact design at less than 12" in height
- Integral condensate pump with up to 18-3/8" lift
- Standard Limited Warranty: 10-year warranty on compressor and all parts

### BENEFITS

- Enhanced indoor air quality and LEED ready with MERV 13 filter options
- Flexible ductwork design with ESP capabilities up to 0.80" W.G.
- New economizer control logic
- New configurable auxiliary heater control logic
- Design allows it to be completely concealed - perfect for retail, classrooms, offices, banks, restaurants, and hotels.





## Submittal Data Sheet

1.25-Ton DC-Ducted Concealed Ceiling Unit

FXMQ15PBVJU

### PERFORMANCE

Indoor Unit Model No.	FXMQ15PBVJU	Indoor Unit Name:	1.25-Ton DC-Ducted Concealed Ceiling Unit
Type:	Ducted	Rated Cooling Conditions:	Indoor (°F DB/WB): 80 / 67 Ambient (°F DB/WB): 95 / 75
Rated Cooling Capacity (Btu/hr):	14,200	Rated Heating Conditions:	Indoor (°F DB/WB): 70 / 60 Ambient (°F DB/WB): 47 / 43
Sensible Capacity (Btu/hr):	12,000	Rated Piping Length(ft):	
Cooling Input Power (kW):	0.200	Rated Height Separation (ft):	
Rated Heating Capacity (Btu/hr):	17,000		
Heating Input Power (kW):	0.19		

### INDOOR UNIT DETAILS

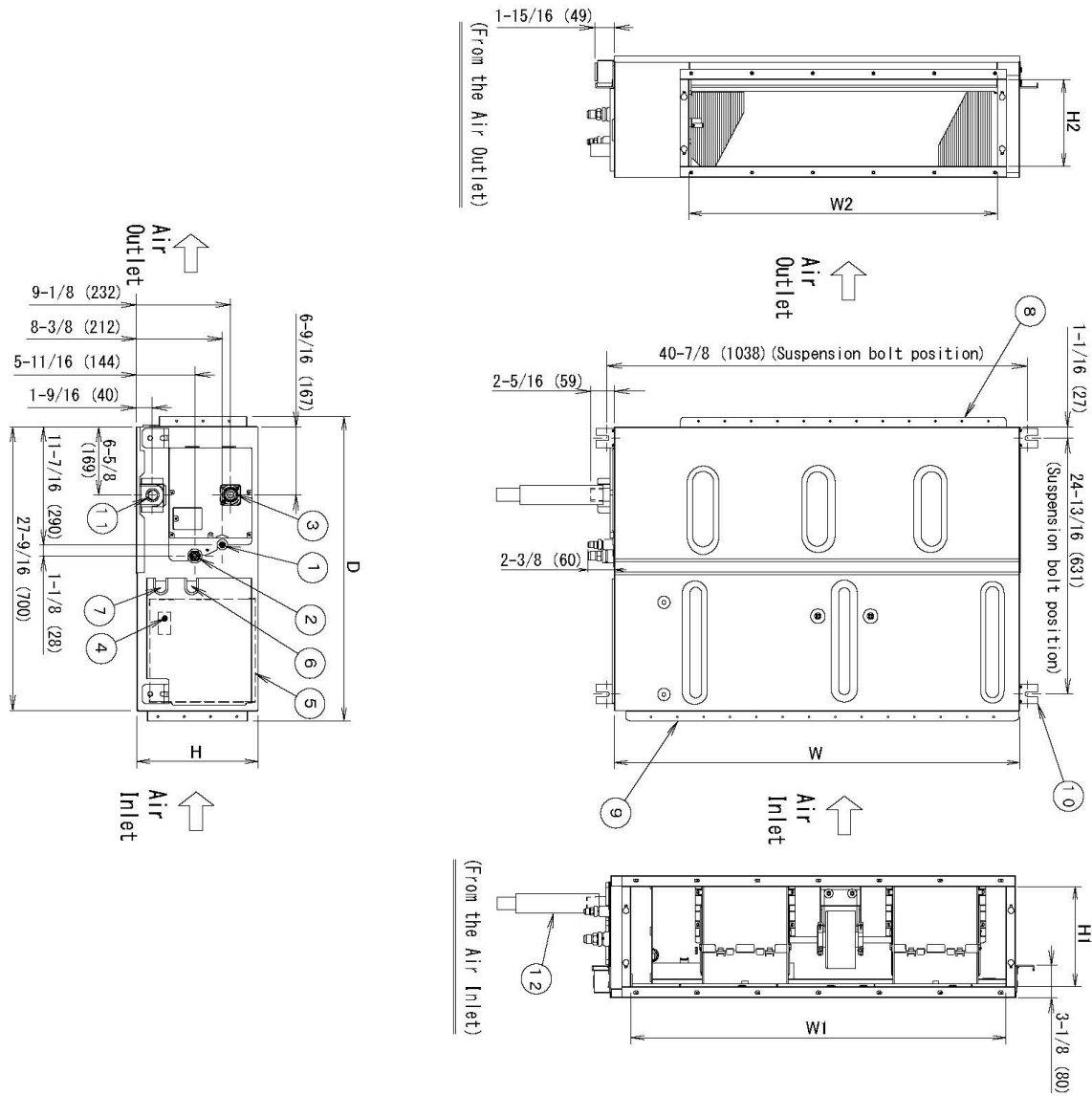
Power Supply (V/Hz/Ph):	208-230 / 60 / 1	Airflow Rate (HH/H/L) (CFM):	560/530/500
Power Supply Connections:	L1, L2, Ground	Moisture Removal (Gal/hr):	
Min. Circuit Amps MCA (A):	1.5	Gas Pipe Connection (inch):	1/2
Max Overcurrent Protection (MOP) (A):	15	Liquid Pipe Connection (inch):	1/4
Dimensions (HxWxD) (in):	11-13/16 x 39-3/8 x 27-9/16	Condensate Connection (inch):	1-1/4
Net Weight (lb):	80	Sound Pressure (H/L) (dBA):	38/37
Ext. Static Pressure (Rated/Max) (inWg):	0.4" / 0.8"	Sound Power Level (dBA):	61

### Submittal Data Sheet

1.25-Ton DC-Ducted Concealed Ceiling Unit

FXMQ15PBVJU

## DIMENSIONAL DRAWING



H	11-13/16 (300)
W	39-3/8 (1000)
D	29-8/16 (749)
Air Inlet	HI 9-3/4 (247)
	WI 36-7/16 (925)
Air Outlet	H2 8-7/16 (215)
	W2 29-15/16 (760)

12	Drain hose (Accessory)	O. D. $\phi$ 1-1/4 ( $\phi$ 32) (Outlet)
11	Socket (For maintenance)	VP25 (O. D. $\phi$ 1-1/4 ( $\phi$ 32), I. D. $\phi$ 1 ( $\phi$ 25))
10	Hanger	For M10
9	Air Inlet flange	
8	Air Outlet flange	
7	Power supply connection	
6	Transmission wiring connection	
5	Control box (Inside)	
4	Ground terminal (Terminal in Control box)	M4
3	Drain pipe connection	VP25 (O. D. $\phi$ 1-1/4 ( $\phi$ 32), I. D. $\phi$ 1 ( $\phi$ 25))
2	Gas pipe connection	$\phi$ 1/2 ( $\phi$ 12.7) flare connection
1	Liquid pipe connection	$\phi$ 1/4 ( $\phi$ 6.4) flare connection
ITEM	PART NAME	REMARK

Note: For additional dimensional data and clearance information, refer to the Engineering Data manual.

Daikin North America LLC, 5151 San Felipe, Suite 500, Houston, TX, 77056

Daikin City Generated Submittal Data

[www.daikinac.com](http://www.daikinac.com) [www.daikincomfort.com](http://www.daikincomfort.com)

(Daikin's products are subject to continuous improvements. Daikin reserves the right to modify product design, specifications and information in this data sheet without notice and without incurring any obligations)

Submittal Date: 9/21/2018 4:43:45 AM

Page 3 of 3