



## Submittal Data Sheet

4.5-Ton MSP Concealed Ducted Unit

FXSQ54TBVJU

### FEATURES

- Eleven capacity options from 5,800 Btu/h to 54,000 Btu/h External static pressure up to 0.6 in. w.g. (150 Pa).
- Low profile height of 9-5/8" (245 mm) for all models.
- 5-speed DC fan motor with selectable Auto fan speed.
- Ease of installation with auto adjusting airflow at commissioning based on external static pressure.
- Independently configurable auxiliary heat on/off temperature settings.
- Factory rear-return, field convertible to bottom-return.
- Integral condensate pump with up 25-5/16" (643 mm) of lift from the drain outlet.
- Drain pan inspection port.
- Standard Limited Warranty: 10-year limited parts warranty.

### BENEFITS

- Requires as little as 11-1/4" (285 mm) of clearance above the ceiling thanks to the low profile design.
- Auto fan speed control optimizes fan energy use by automatically adjusting the unit's fan speed as the room temperature approaches the set point.
- The drain pan inspection port simplifies maintenance by allowing for simple and easy inspection of the drain pan conditions.
- Designed for quiet operation, with sound levels as low as 28 dB(A).





## Submittal Data Sheet

4.5-Ton MSP Concealed Ducted Unit

FXSQ54TBVJU

### PERFORMANCE

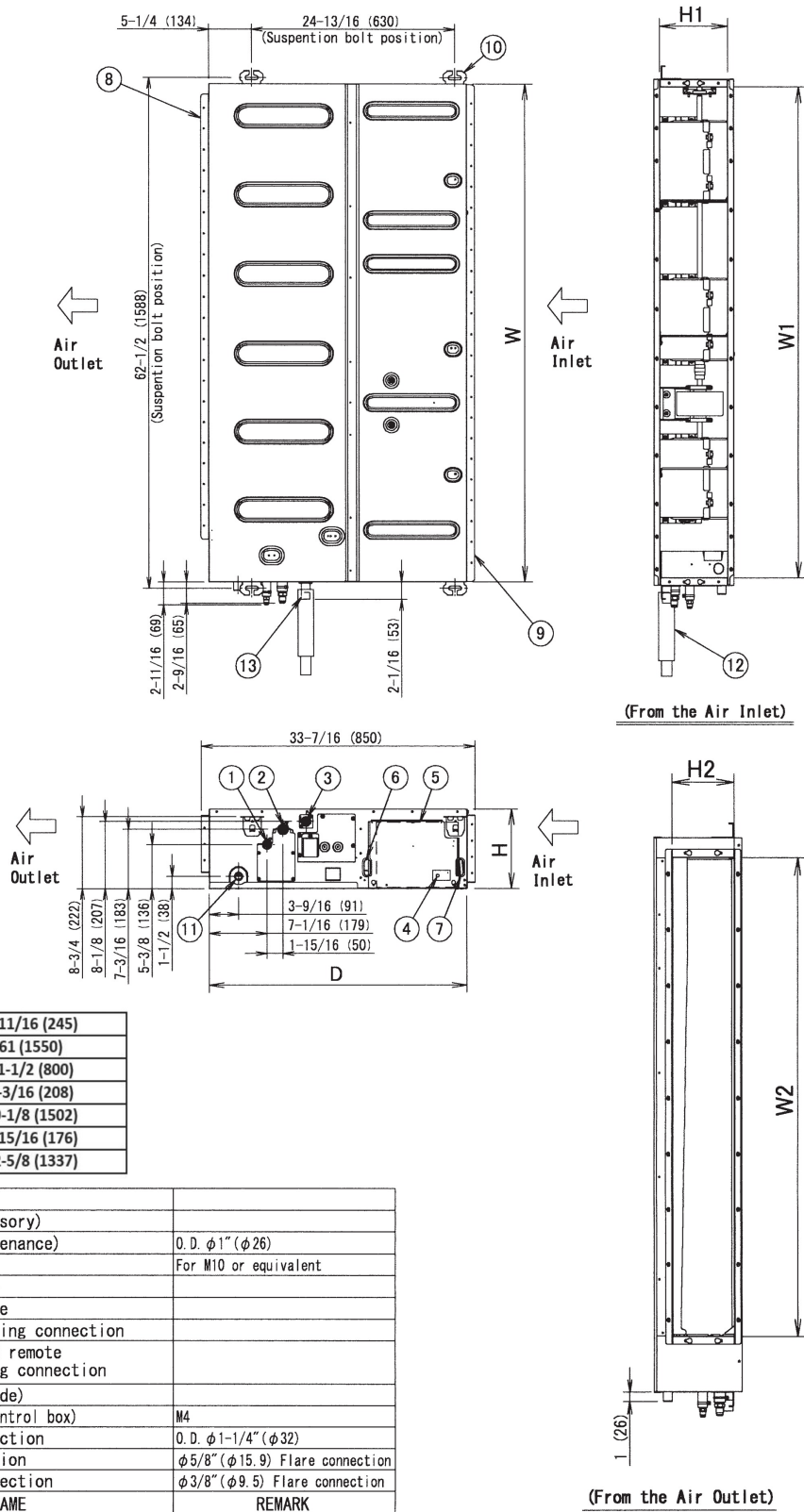
Indoor Unit Model No.	FXSQ54TBVJU	Indoor Unit Name:	4.5-Ton MSP Concealed Ducted Unit
Type:	Concealed Ducted	Rated Cooling Conditions:	Indoor (°F DB/WB): 80 / 67 Ambient (°F DB/WB): 95 / 75
Rated Cooling Capacity (Btu/hr):	54,000	Rated Heating Conditions:	Indoor (°F DB/WB): 70 / 60 Ambient (°F DB/WB): 47 / 43
Sensible Capacity (Btu/hr):	38,600	Rated Piping Length(ft):	
Cooling Input Power (kW):	0.411	Rated Height Separation (ft):	
Rated Heating Capacity (Btu/hr):	60,000		

### INDOOR UNIT DETAILS

Power Supply (V/Hz/Ph):	208/230 / 60 / 1	Airflow Rate (H) (CFM):	1377
Power Supply Connections:	L1, L2, G	Moisture Removal (Gal/hr):	
Min. Circuit Amps MCA (A):	3.3	Gas Pipe Connection (inch):	5/8
Max Overcurrent Protection (MOP) (A):	15	Liquid Pipe Connection (inch):	3/8
Dimensions (HxWxD) (in):	9-11/16 x 61 x 31-1/2	Condensate Connection (inch):	1-1/4
Net Weight (lb):	115	Sound Pressure (H/L) (dBA):	43/40/36
Ext. Static Pressure (Rated/Max) (inWg):	0.2 / 0.56	Sound Power Level (dBA):	

**Submittal Data Sheet**  
**4.5-Ton MSP Concealed Ducted Unit**  
 FXSQ54TBVJU

**DIMENSIONAL DRAWING**



Note: For additional dimensional data and clearance information, refer to Engineering Data