



DAIKIN FBO SERIES HEATING AND COOLING SYSTEMS

HSP CONCEALED DUCTED

Up to 16.9 SEER2 / Up to 9.5 HSPF2

Up to 12.5 EER2

INVERTER (VARIABLE-SPEED) COMPRESSOR




Comfort

We offer a wide range of products, and always provide you with the ideal solution, whether for an apartment, condo or a house. Our units are whisper quiet and, with their specially designed airflow pattern, they create your ideal indoor climate.

Daikin units are designed to include features that let you create your own unique ecosystem. From the wide-angle louver design to the auto-swing and comfortable mode controller settings, effective heating and cooling is ensured throughout the space.

Smart inverter technology

 Integrated with an inverter (variable-speed) compressor, Daikin systems deliver the capacity required to maintain desired room conditions, typically reducing energy consumption by up to 30% or more (compared to traditional fixed-speed ducted systems). This technology minimizes temperature fluctuations and provides continuous cooling and heating comfort.

Energy efficiency

Our products are designed to be highly efficient all year round, and their low energy consumption is reflected in low energy bills for you.

Flexibility

With space saving design, wide operation range and long pipe lengths you have maximum flexibility in your design to suit your needs.

Reliability

Daikin products are renowned for their reliability. And you can rely on service to match, with industry leading warranties.*



* Complete warranty details available from your local dealer or at www.daikincomfort.com. The duration of warranty coverages in Texas differs in some cases.

FBQ Series

Individual comfort and control

Individual temperature control provides comfort for the entire space. With effective cooling and heating coverage at quiet operating sound levels, these systems combine superior comfort control with lifestyle convenience all at the touch of a button.

Premium comfort features:

- » High external static pressure (ESP) capabilities offer up to 0.8 in. w.g.
- » DC fan motor provides excellent efficiency
- » Three user selected fan speeds available plus fan "Auto" logic
- » Built-in condensate pump and drain pan inspection port
- » Bottom access for easy service
- » Low profile design at less than 10" high
- » Connect to Daikin Zoning Kit (Optional)
- » Low-Ambient cooling operation down to 0°F DB (-17.7°C DB) (with optional Air Adjustment Grille(s))
- » Available MERV 13 filter kit (optional)



- » Increases the flexibility of the SkyAir systems in both residential and commercial applications by adding a Zoning Box to an indoor unit fan coil
- » Allows several separate ducts to supply air to different individually-controlled zones.
- » The DZK BACnet™ Interface will work with any BACnet/IP compatible Building Management System



Wired*
Thermostat



Wireless*
Thermostat
*for DZK Kit



Wireless Lite*
Thermostat



RZQ_TBvjUA
RZR_TBvjUA



DZK Kit
(Option)



FBQ_TBvjU



AZAI6WSDCKA



DTST-ONE-ADA-A



BRC1H71W



BRC1E73



BRC4C82



AZAI6WSPDKC



Outdoor unit features:



Anti-Corrosion Treatment on Heat Exchanger



Auto-Restart – The unit memorizes the operation mode, airflow and temperature settings. Should there be a power failure when the unit is in operation, it will automatically return to the same operating conditions when the power is restored.



Self-Diagnosis – In the event that a problem develops with the unit, malfunction codes can be displayed on the liquid crystal panel of the remote control for fast and easy fault diagnosis.

FBQ SERIES HEATING AND COOLING SYSTEMS HSP CONCEALED DUCTED

Up to 16.9 SEER2 / Up to 9.5 HSPF2 / Up to 12.5 EER2

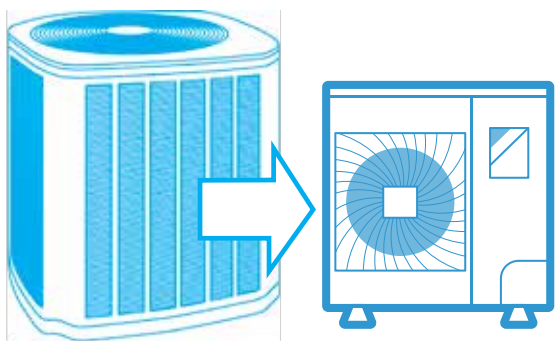


Feel the difference

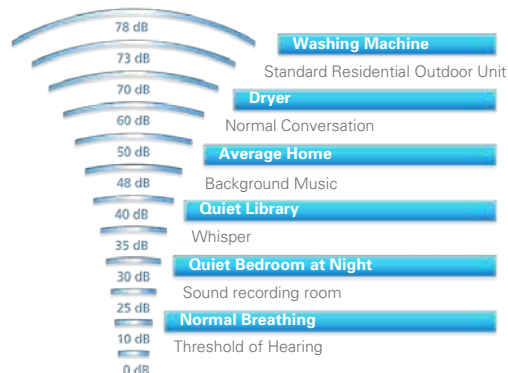
Daikin's FBQ HSP concealed ducted systems offer a powerful solution, compact in design and easily concealed in a ceiling. With both cooling only and heat pump applications, *SkyAir* is the ultimate solution for large bonus rooms, restaurants, shops, offices, data rooms and other light commercial projects up to 2,500 square feet*.

Hear the difference

Utilizing inverter technology to maintain comfort settings, Daikin systems most often operate at low speeds with indoor sound levels as low as 37 decibels (dB) and outdoor sound levels as low as 57 dB.



Sound levels as low as:



See the difference

A Daikin inverter system is designed for installation where space is limited, such as with zero lot lines, or limited to roof, wall or terrace areas. The compact and lightweight design, when compared to traditional solutions allows the Daikin inverter system to be used in homes with the strictest of limitations with relative ease.

Advanced water-shedding drain pan

Engineered with multiple drain holes and channels providing effective water shedding.



Single fan drain pan



Double fan drain pan

Knowledge is power

In general, system performance is measured by a higher Seasonal Energy Efficiency Ratio (SEER2) and Energy Efficiency Ratio (EER2). Higher ratings mean lower operating costs. Similarly, a higher rated Heating Seasonal Performance Factor (HSPF2) and Coefficient of Performance (COP) means a more efficient air-source heat pump.

Why is it important?

The COP of a heat pump is the ratio of: $COP = \frac{\text{energy out}}{\text{energy in}}$. When the COP is >1 , the result is a system providing more heating energy than energy consumed. As the COP increases, the higher the efficiency — resulting in lower utility costs.

Up to	
16.9 SEER2	12.5 EER2
9.5 HSPF2	3.7 COP2
(Coefficient of Performance)	

Inverter Ducted Heat Pump
Efficiency ratings

* Equipment selection should always be based on detailed load calculations.





You're always in control.

Individual comfort and control

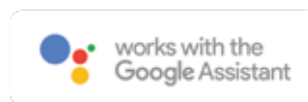
Daikin systems have an available infrared remote controller allowing you to access all functions at the click of a button.

From anywhere in the world. Or your living room.

It can happen to anyone. You forgot to change the temperature of your heat pump system or air conditioner before leaving the house, or you will be delayed returning home and wish to avoid needlessly heating or cooling your home. What in the past would have resulted in wasted energy is no longer a problem. With the DKN App, you are always in control. You can use your tablet or smart-phone to access your Daikin system via the internet*.



*Requires AZAI6WSCDKA Wi-Fi adaptor.



Daikin Madoka Remote Controller



Daikin is pleased to introduce the *Madoka* remote controller for the North American FBQ & *SkyAir* indoor units. The *Madoka* features a sleek and stylish design with an intuitive interface including touch button control. It retains advanced functions for indoor unit control. It can be commissioned and managed with ease through a Bluetooth® configuration app or via the onboard menus. The *Madoka* provides 3 configurable display modes: Text (default), Icon, and Scale to help meet project and occupant needs. Learn more at www.daikinac.com.



Madoka Quick Set App
Available for download on
iOS and Android devices.

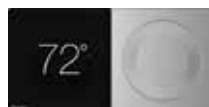


Daikin DKN Plus Interface



The new Daikin DKN Plus Interface (AZAI6WSPDKC) enables the energy-efficient control of Daikin air conditioners by a third-party thermostat or an automation system. With this interface, third party devices or systems can control the *SkyAir* indoor units through the DKN Cloud NA App via Wi-Fi, Cloud API, Modbus®, BACnet™ MS/TP, or thermostat relay contacts. This interface can be commissioned easily through the DKN Cloud NA app via Bluetooth® Low Energy (BLE). Learn more at www.daikinac.com.

Daikin One+ Smart Thermostat



The Daikin *One+* smart thermostat is now available for *SkyAir* indoor unit models. With the new translation adaptor, connecting the Daikin *One+* smart thermostat provides several user features including remote monitoring, control and geofencing using the Daikin *One* home app, *Google*, and *Amazon* voice assistants. Learn more at www.daikinone.com.

**Note that the optional handheld remote should not be used together with the Daikin *One+* smart thermostat.

FBQ SERIES HEATING AND COOLING SYSTEMS

HSP CONCEALED DUCTED

Model	Indoor Unit		FBQ18TBVJU		FBQ24TBVJU		FBQ30TBVJU		FBQ36TBVJU		FBQ42TBVJU		FBQ48TBVJU			
	Outdoor Unit (Cooling Only)		RZR18TBVJUA		RZR24TBVJUA		RZR30TBVJUA		RZR36TBVJUA		RZR42TBVJUA		RZR48TBVJUA			
	Outdoor Unit (Heat Pump)		RZQ18TBVJUA		RZQ24TBVJUA		RZQ30TBVJUA		RZQ36TBVJUA		RZQ42TBVJUA		RZQ48TBVJUA			
			Cooling	Heating	Cooling	Heating	Cooling	Heating	Cooling	Heating	Cooling	Heating	Cooling	Heating		
Capacity Rated			Btu/h		17,700	20,600	23,400	27,400	28,400	34,800	35,000	40,000	40,000	47,000	46,500	54,000
COP Rated*			2.9		3.1		3.4		3.3		3.7		3.1			
EER2 Rated			12.5		10.5		12.2		11.7		10.3		8.3			
SEER2			15.5		15.4		16.5		16.9		15.6		15.3			
HSPF2			8.5		9.3		8.9		8.8		9.5		9.3			
AHRI Cooling Only#			211635149		211635150		211635151		211635152		211635153		211635145			
AHRI Heat Pump#			211635170		211635171		211635172		211635173		211635174		211635175			
Piping Connections	Liquid	in. (mm)	Ø 3/8 (Ø 9.5)													
	Gas		Ø 5/8 (Ø 15.8)													
	Drain		Ø 1 (Ø 25.4)													
Max. Interunit Piping Length		ft. (m)	164 (50)						230 (70)							
Max. Interunit Height Difference			98.4 (30)													
Chargeless			15 (4.5)													
Amount of Additional Charge of Refrigerant		lbs./ft. (kg/m)	0.036 (0.0535)													
Operating Range - Cooling		°F DB (°C DB)	23° – 122°F (-5° – 50°C)													
Operating Range – Cooling with Optional Air Adjustment Grille		°F DB (°C DB)	0° - 122°F (-17.7° - 50°C)													
Operating Range - Heating*		°F WB (°C WB)	-4° – 60°F (-20° – 15.5°C)													
Indoor Unit			FBQ18TBVJU		FBQ24TBVJU		FBQ30TBVJU		FBQ36TBVJU		FBQ42TBVJU		FBQ48TBVJU			
External Static Pressure		In. Wg (Pa)	0.8 (200)													
Airflow Rate	H	cfm (m³/min)	635 (18)		742 (21.0)		1,094 (31)		1,130 (32)		1,377 (39)		1,377 (39)			
	M		565 (16.0)		635 (18.0)		847 (24)		953 (27)		1,130 (32)		1,130 (32)			
	L		512 (14.5)		565 (16)		795 (22.5)		795 (22.5)		918 (26)		918 (26)			
Fan	Type		Sirocco Fan													
Air Direction Control			N/A													
Air Filter			N/A													
Dimensions (H × W × D)		in. (mm)	9-11/16 x 39-3/8 x 31-1/2 (245 x 1,000 x 800)						9-11/16 x 55-1/8 x 31-1/2 (245 x 1,400 x 800)							
Weight		lbs. (kg)	77 (35)		82 (37)		101 (46)				104 (47)					
Sound Pressure Level (H / M / L / SL)			dB(A)		38 / 35 / 32		39 / 35 / 33		43 / 38 / 36		44 / 40 / 36		48 / 44 / 39			
Outdoor Unit			RZR18TBVJUA / RZQ18TBVJUA		RZR24TBVJUA / RZQ24TBVJUA		RZR30TBVJUA / RZQ30TBVJUA		RZR36TBVJUA / RZQ36TBVJUA		RZR42TBVJUA / RZQ42TBVJUA		RZR48TBVJUA / RZQ48TBVJUA			
Compressor	Motor Output	W	1,900						3,500							
Refrigerant	Type		R-410A													
	Charge	lbs. (kg)	6.4 (2.9)						7.9 (3.6)							
Airflow Rate	H	cfm (m³/min)	2,682 (76)						3,741 (106)							
Dimensions (H × W × D)		in. (mm)	39 x 37 x 12-5/8 (990 x 940 x 320)						52-15/16 x 35-7/16 x 12-5/8 (1,345 x 900 x 320)							
Weight		lbs. (kg)	172 (78)						225 (102)							
Sound Pressure Level	H	dB(A)	58	61*	58	61*	57	59*	57	59*	57	59*	57	59*		

*Applicable to heat pump models only, refer to installation manual for more details.

OUTDOOR UNIT	OPTIONAL ACCESSORIES
KPW5G112	Air Adjustment Grille (RZR18, 24; RZQ18, 24)
KPW5F80 x 2	Air Adjustment Grille (RZR30, 36, 42, 48; RZQ30, 36, 42, 48)
KEHJ5A160E	Drain Pan Heater (RZQ18, 24, 30, 36, 42, 48)
KPS00344	Snow Visor (RZR18, 24, 30, 36, 42, 48; RZQ18, 24, 30, 36, 42, 48)
VRVQA-SH-SF	Snow Hood Kit (RZR18, 24; RZQ18, 24)
VRVQA-SH-DF	Snow Hood Kit (RZR30, 36, 42, 48; RZQ30, 36, 42, 48)

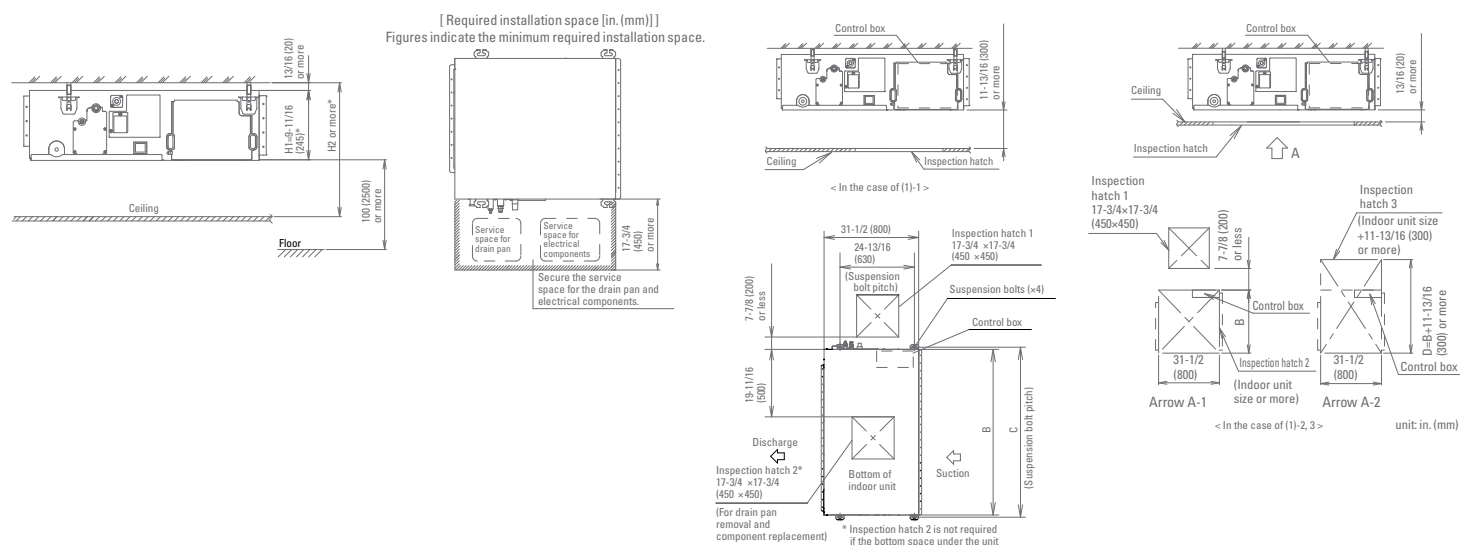
FBQ SERIES WALL-MOUNTED HSP CONCEALED DUCTED INSTALLATION

Ease of installation

Connected by a pair of refrigerant lines, few electrical connections, and no ductwork, indoor and outdoor units can be easily installed in existing spaces with minor disruption and often in a single day's work. The compact and lightweight designs combined with piping lengths up to 230 ft. and minimal wiring allow installation with minimal time and costs.

FBQ18/24/30/36/42/48TBVJU

Space required for installation (in.)

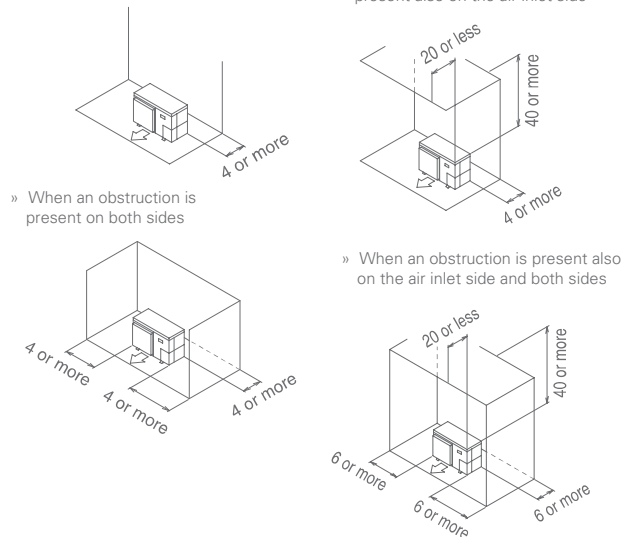


For RZR18/24/30/36/42/48TBVJUA, RZQ18/24/30/36/42/48TBVJUA

Space required for installation (in.)

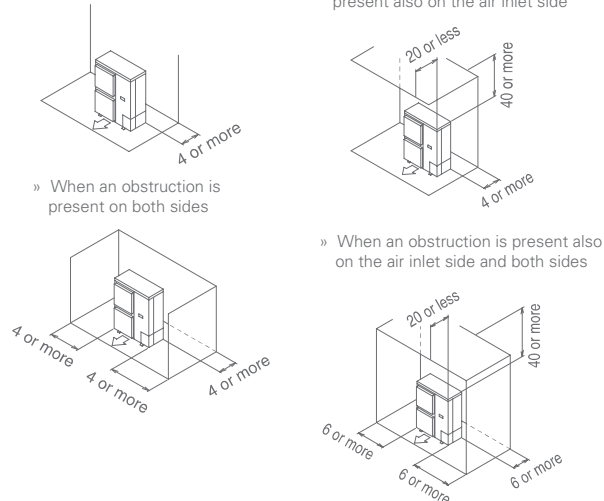
(A) When an obstruction is present on the the air inlet side

- » When the upward area is open
 - (1) When one outdoor unit is installed individually
 - » When an obstruction is present only on the air inlet side
- » When an obstruction is present in the upward area
 - (1) When one outdoor unit is installed individually
 - » When an obstruction is present also on the air inlet side



(A) When an obstruction is present on the the air inlet side

- » When the upward area is open
 - (1) When one outdoor unit is installed individually
 - » When an obstruction is present only on the air inlet side
- » When an obstruction is present in the upward area
 - (1) When one outdoor unit is installed individually
 - » When an obstruction is present also on the air inlet side



About Daikin:

Daikin Industries, Ltd. (DIL) is a global Fortune 1000 company and is recognized as one of the largest HVAC (Heating, Ventilation, Air Conditioning) manufacturers in the world. Founded in 1924, Daikin is approaching 100 years of HVAC worldwide leadership. DIL is primarily engaged in developing indoor comfort systems and refrigeration products for residential, commercial, and industrial applications. Its consistent success is derived, in part, from a focus on innovative, energy-efficient, and premium quality indoor climate and comfort management solutions.

Daikin *SplitXpress* Selection Tool

The new interactive *SplitXpress* mobile app and website provide a complete product selection tool to streamline system selection for single and multi-zone projects. Users can create equipment selections and add accessories / pricing details to quickly share quotes with customers. Available for free on the *App Store* (iOS) and *Google Play* (Android), and at <https://splitxpress.daikincity.com>.



WARNINGS:

- » Always use a licensed installer or contractor to install this product. Do not try to install the product yourself. Improper installation can result in water or refrigerant leakage, electrical shock, fire or explosion.
- » Use only those parts and accessories supplied or specified by Daikin. Ask a licensed contractor to install those parts and accessories. Use of unauthorized parts and accessories or improper installation of parts and accessories can result in water or refrigerant leakage, electrical shock, fire or explosion.
- » Read the User's Manual carefully before using this product. The User's Manual provides important safety instructions and warnings. Be sure to follow these instructions and warnings.
- » For any inquiries, contact your local Daikin sales office.



App Store is a registered trademark of Apple Inc.

Google Play and the *Google Play* logo are trademarks of Google LLC.

The *Bluetooth*® word mark and logos are registered trademarks owned by Bluetooth SIG, Inc., and any use of such marks are under license.

BACnet™ is a trademark of ASHRAE.

Modbus® is a registered trademark of Schneider Electric USA, Inc.



ADDITIONAL INFORMATION

Before purchasing this appliance, read important information about its estimated annual energy consumption, yearly operating cost, or energy efficiency rating that is available from your retailer.



Our continuing commitment to quality products may mean a change in specifications without notice.

© 2023 **DAIKIN COMFORT TECHNOLOGIES NORTH AMERICA, INC.** · Houston, Texas · USA · www.daikincomfort.com or www.daikinac.com

CB-FBQ_03-23